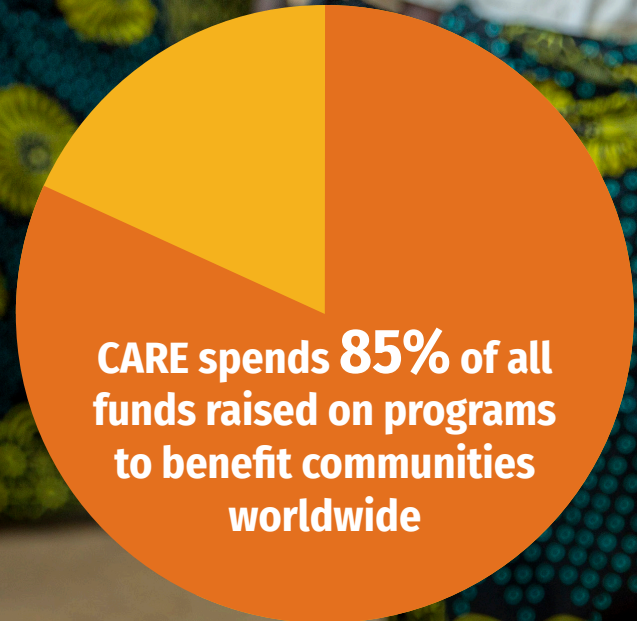




2018 FINANCIAL OVERVIEW



CARE spends **85%** of all funds raised on programs to benefit communities worldwide

	CARE Australia	CARE Canada	CARE Denmark	CARE Germany	CARE France	CARE India	CARE Japan	CARE Netherlands	CARE Norway	CARE Austria	CARE Peru	Raks Thai	CARE Int'l UK	CARE USA	Care Int'l Secretariat	CARE Int'l AISBL	Comb. Adj.	Total 2018	Total 2017
COMBINED STATEMENT OF ACTIVITY AND NET ASSETS FOR THE FINANCIAL YEAR 2018 ('000 EURO)																			
SUPPORT AND REVENUE																			
Donor contributions	9,183	6,395	3,144	12,460	11,069	2,704	674	4,437	2,358	6,612	935	453	12,763	138,704	1,113	1,208	-2,321	211,892	248,376
Programs contracted with member organizations	9,096	21,095	-	4,504	10,694	18,951	-	79	-	-	2,606	418	-	151,054	3,054	1,171	-222,723	-	0
Contributions in kind	97	4,161	-	-	298	-	5	-	-	1,747	-	13	353	32,699	-	13	-13	39,374	54,613
Government and non-governmental agencies grants	17,919	49,039	11,481	32,408	9,743	1,529	332	36,958	21,435	23,652	1,589	4,976	49,315	181,678	-	2,343	-2,343	442,056	524,980
Interest and other income	1,278	984	277	463	606	410	13	74	173	12	139	119	367	6,659	-	146	-146	11,573	13,429
Administrative support	-	-	-	-	-	-	-	-	-	-	-	-	-	-	4,855	-	-4,855	-	0
TOTAL SUPPORT AND REVENUE	37,574	81,674	14,902	49,835	32,411	23,594	1,025	41,548	23,965	32,023	5,269	5,979	62,798	510,796	9,022	4,881	-232,400	704,895	841,398
EXPENSES																			
Development program activities	26,745	38,274	11,216	16,715	21,216	18,672	639	22,514	10,838	13,018	3,394	5,789	20,842	277,788	2,244	3,636	-135,239	358,302	398,894
Humanitarian program activities	3,085	38,483	779	26,557	6,204	388	71	17,049	11,655	11,163	983	23	47,144	169,251	3,622	375	-92,307	244,525	299,880
Supporting services, fundraising spend and other expenses	7,093	4,775	2,652	6,690	4,746	3,931	237	4,939	2,666	6,065	1,105	298	8,876	57,591	3,377	869	-4,855	111,054	112,448
TOTAL EXPENSES	36,923	81,532	14,648	49,962	32,166	22,991	947	44,502	25,159	30,246	5,482	6,111	76,862	504,630	9,242	4,880	-232,400	713,882	811,222
EXCESS (DEFICIENCY)	650	141	254	-127	245	603	78	-2,954	-1,193	1,777	-213	-132	-14,064	6,166	-220	1	-	-8,987	30,176
Net assets, beginning of year (restated)	8,047	4,234	1,000	2,771	3,148	2,646	411	12,029	6,834	6,870	4,570	3,757	32,257	295,515	2,709	0	-	386,798	362,466
Currency translation adjustment	85	-	-	-	-140	-	-	-	-	-	25	28	-	1,124	-	-	-	1,123	22,120
Other changes	-18	-2	30	-114	145	-121	-10	-0	40	-	-1	-3	-24	6,069	-0	0	-	5,991	-11,352
NET ASSETS, END OF YEAR	8,765	4,372	1,284	2,529	3,398	3,128	479	9,076	5,680	8,647	4,382	3,651	18,169	308,874	2,488	1	-	384,924	403,410

COMBINED BALANCE SHEET FOR THE FINANCIAL YEAR 2018 ('000 EURO)

ASSETS																			
Cash and short term investments	19,003	23,779	2,558	17,469	5,229	7,946	412	17,908	6,399	14,034	1,482	6,679	19,837	180,230	5,888	1,747	-	330,602	338,410
Receivables from governmental and non-governmental agencies	1,669	6,126	1,380	8,702	8,233	1,864	90	19,457	152	8,685	581	-	13,934	98,491	1,477	1,152	-61,713	110,279	140,558
Deposits and other assets	9,103	532	509	268	1,458	141	408	54	189	52	1,231	510	44	151,013	27	38	-	165,576	165,393
Property and equipment, net	810	2,264	184	888	367	381	10	25	-	286	2,899	32	622	13,109	6	58	-	21,941	21,140
TOTAL ASSETS	30,585	32,701	4,632	27,327	15,288	10,332	919	37,444	6,739	23,057	6,193	7,221	34,437	442,843	7,397	2,995	-61,713	628,398	665,501
LIABILITIES AND FUND BALANCE																			
Accounts payable and accrued expenses	1,114	5,564	-	-	5,319	2,600	133	-	-	205	1,021	47	2,563	39,856	914	-	-	59,335	95,075
Advances by governmental and non-governmental agencies	18,117	22,435	2,857	14,998	5,935	4,604	294	430	342	13,112	791	1,834	13,705	57,985	984	2,993	-61,713	99,705	97,080
Debt and other liabilities	2,589	330	491	9,799	636	-	13	27,938	718	1,093	-	1,688	-	36,129	3,011	-	-	84,434	69,936
TOTAL LIABILITIES	21,820	28,329	3,348	24,798	11,890	7,204	440	28,368	1,059	14,410	1,811	3,569	16,268	133,970	4,909	2,993	-61,713	243,474	262,091
NET ASSETS	8,765	4,372	1,284	2,529	3,398	3,128	479	9,076	5,680	8,647	4,382	3,651	18,169	308,874	2,488	1	-	384,924	403,410
TOTAL LIABILITIES AND NET ASSETS	30,585	32,701	4,632	27,327	15,288	10,332	919	37,444	6,739	23,057	6,193	7,221	34,437	442,843	7,397	2,995	-61,713	628,398	665,501